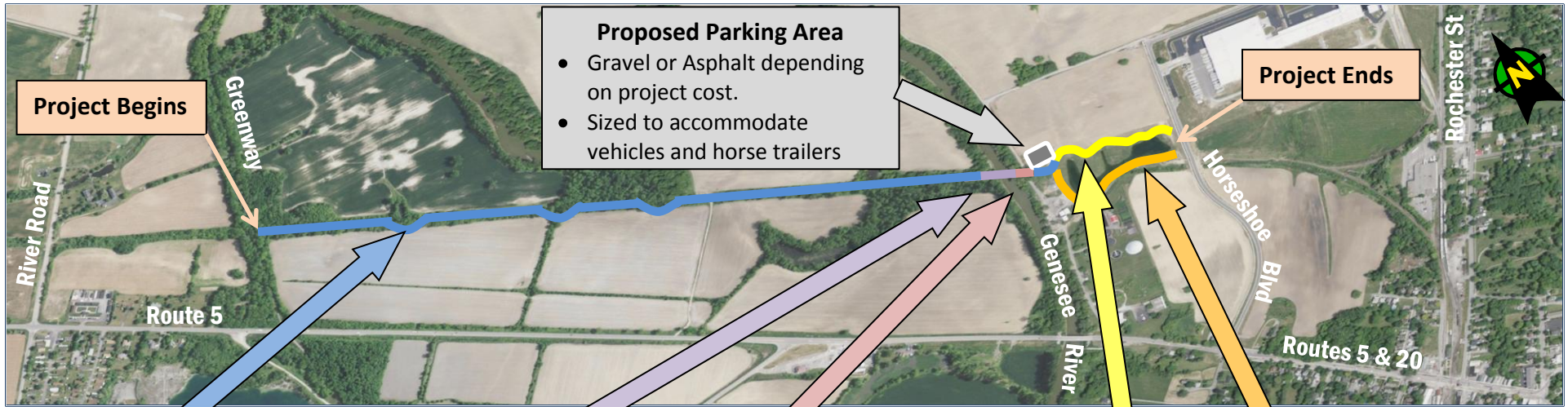


### Proposed Alignment



**Proposed Parking Area**

- Gravel or Asphalt depending on project cost.
- Sized to accommodate vehicles and horse trailers

**Project Begins**

**Project Ends**

**Trail on Former Railroad Corridor**

- The trail begins at the Genesee Valley Greenway
- The trail will be 10' wide with 2' shoulders on the former rail bed and approx. 5,600' in length.
- Stabilized surface for all trail users.
- The trail will be routed around abutments of three former bridges.
- A new culvert will be installed for stream crossing.
- Trail ramps down to parking area east of Farmers Road.

**Trail on Existing Truss Bridge**

- The existing railroad truss bridge over the Genesee River is eligible for listing on the National Register.
- The span is approx. 220' including a short approach span at the west end.
- A new timber deck and rail are proposed.
- The timber deck will be 10' or 11' wide depending on project cost.

**Trail on New Bridge Over Farmers Rd**

- The new bridge over Farmers Road is a span of approx. 35'.
- A new bridge will be a steel multi-girder and have a timber deck and railing.
- The timber deck will be 10' or 11' wide depending on project cost.

**Option 1 - Trail North of Pond**

- The trail begins at the parking area and travels along the northerly edge of the pond and is approx.. 1,100' in length.
- The trail will be 10' wide with 2' shoulders.
- The trail surface will be either asphalt or stone dust depending on project cost.

**Option 2 - Trail South of Pond**

- The trail begins at the parking area and travels along the southerly edge of the pond and is approx. 1,400' in length.
- The trail will be 8' wide with 2' shoulders. The width is limited by the geometry of the pond embankment.
- The trail surface will be either asphalt or stone dust depending on project cost.
- The trail will span the pond spillway with a system of drainage pipes.

## Project Objectives

- Provide a recreational trail link between the Genesee Valley Greenway and the Village of Avon.
- Preserve the abandoned railroad corridor for public transportation.
- Utilize the historic railroad bridge over the Genesee River as part of the trail system.
- Provide ADA compliant trail surfaces.
- Construct a traversable span over Farmers Road.
- Provide parking and trailhead access for trail users.
- Construct all trail components and amenities in the most cost-effective manner while still meeting the project objectives.

## Project Schedule

Project Initiation → August 2011  
Submit Draft Design Report → December 2011  
Public Info Meeting No. 1 → January 23, 2012  
Revise Draft Design Report for Public Comment  
→ February 2012  
Final Design Report → March 2012  
Design Approval → April 2012  
Final Design → April 2012-August 2012  
Bid & Award Project → October 2012  
Construction Complete → October 2013

## Trail Users

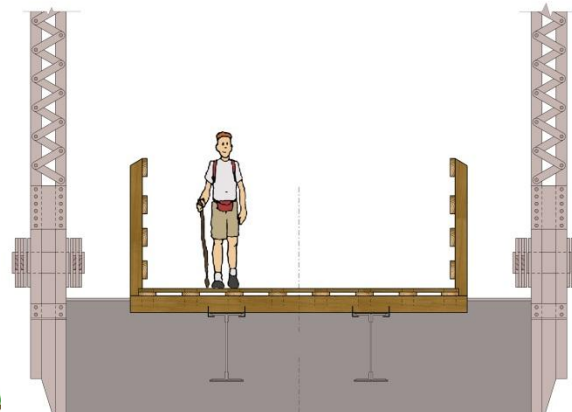
The Erie-Attica Trail will allow the same users as the Genesee Valley Greenway from the Greenway to the parking area. This includes:

- Pedestrians
- Bicycles
- Horses
- Snowmobiles

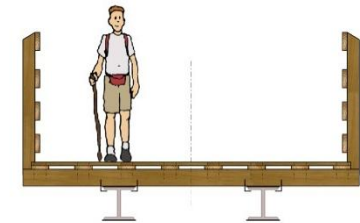
From the parking area to Horseshoe Boulevard, the trail will accommodate pedestrians and bicycles only.



**RAIL CORRIDOR**  
10' Wide Trail – Stabilized Surface



**TRUSS BRIDGE OVER GENESEE RIVER**  
10' or 11' Wide Timber Deck



**NEW SPAN OVER FARMERS ROAD**  
10' or 11' Wide Timber Deck



**TRAIL THROUGH LIVINGSTON INDUSTRIAL COMPLEX**  
8' or 10' Wide Trail – Asphalt or Stone Dust

*Please provide us with any comments or concerns you have regarding the project by filling out a comment sheet or contacting:*

Roseann Schmid, P.E., Project Manager  
Fisher Associates, Design Consultant  
(585) 334-1310, ext. 295  
[rschmid@fisherassoc.com](mailto:rschmid@fisherassoc.com)

OR

Chris Quinlan / Village Treasurer  
Village of Avon  
(585) 226-8118  
[quinlan@frontiernet.net](mailto:quinlan@frontiernet.net)