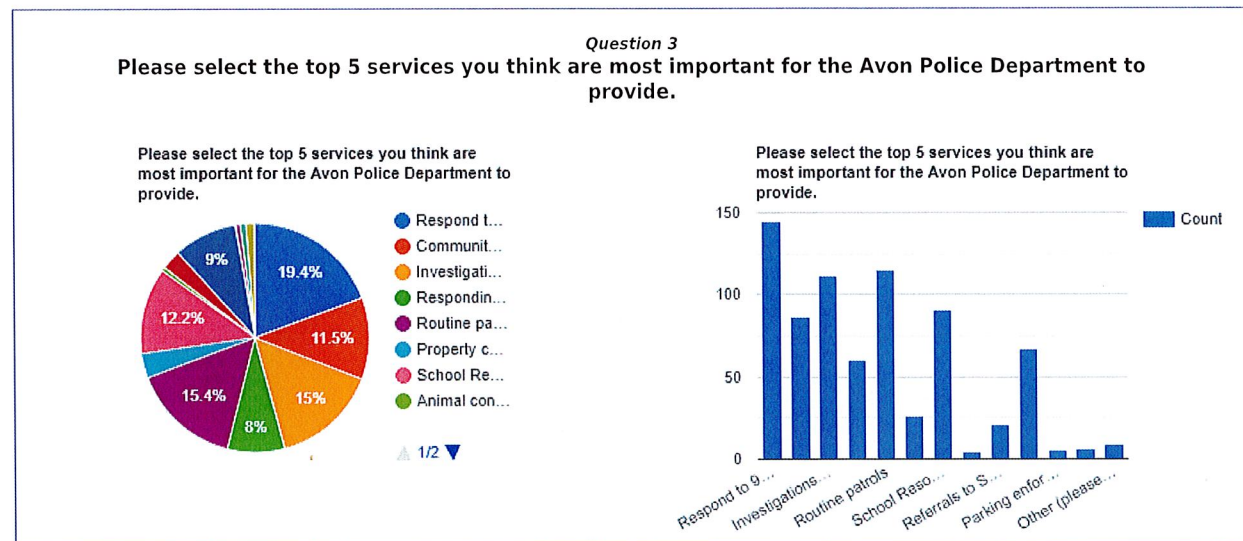
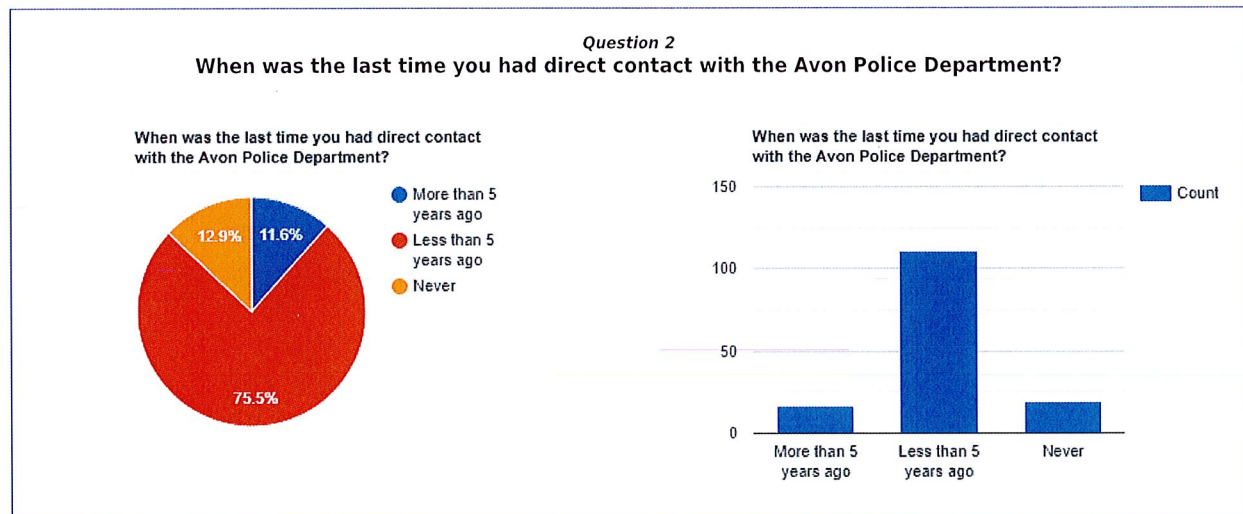
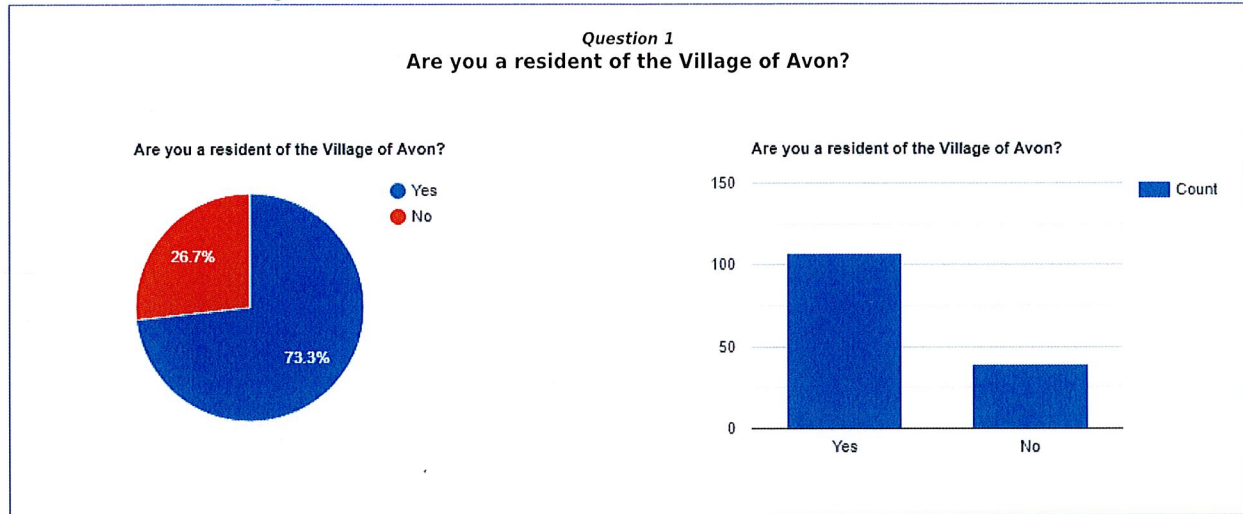
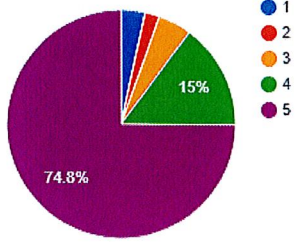


Village of Avon Police Reform and Reinvention Collaborative Survey

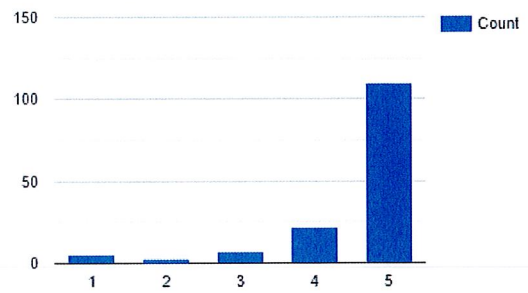


**Question 4**  
**Avon Police Officers are a necessary part of our community.**

Avon Police Officers are a necessary part of our community.



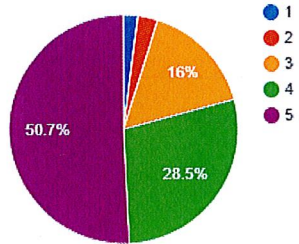
Avon Police Officers are a necessary part of our community.



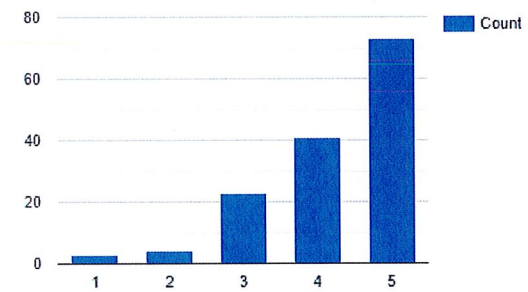
Median: 5  
 Mean: 4.56  
 Mode: 5  
 Range: From 1 To 5  
 Standard deviation: 0.94

**Question 5**  
**Avon Police Officers in our community are well trained.**

Avon Police Officers in our community are well trained.



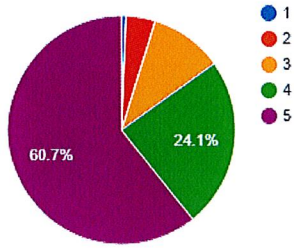
Avon Police Officers in our community are well trained.



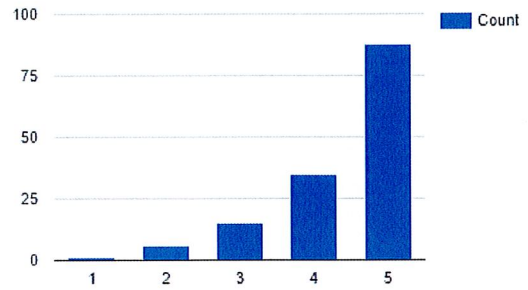
Median: 5  
 Mean: 4.23  
 Mode: 5  
 Range: From 1 To 5  
 Standard deviation: 0.96

**Question 6**  
**Avon Police Officers are responsive to the public's needs.**

Avon Police Officers are responsive to the public's needs.



Avon Police Officers are responsive to the public's needs.

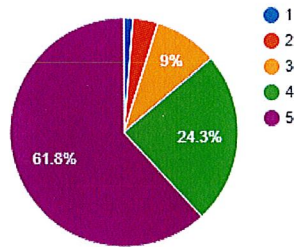


Median: 5  
 Mean: 4.4  
 Mode: 5  
 Range: From 1 To 5  
 Standard deviation: 0.89

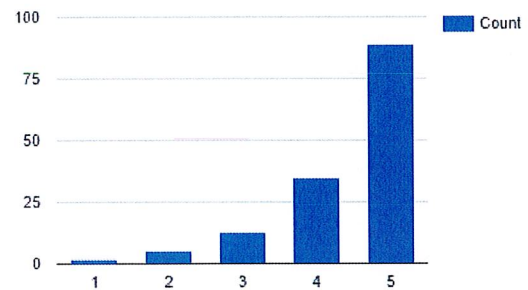
Question 7

Avon Police Officers act in a professional manner.

Avon Police Officers act in a professional manner.



Avon Police Officers act in a professional manner.

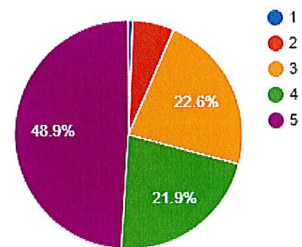


Median: 5  
 Mean: 4.42  
 Mode: 5  
 Range: From 1 To 5  
 Standard deviation: 0.9

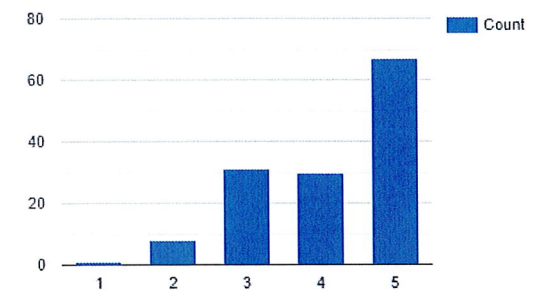
Question 8

Avon Police Officers are held accountable for their actions.

Avon Police Officers are held accountable for their actions.



Avon Police Officers are held accountable for their actions.

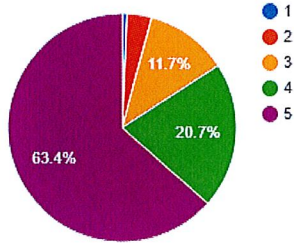


Median: 4  
Mean: 4.12  
Mode: 5  
Range: From 1 To 5  
Standard deviation: 1

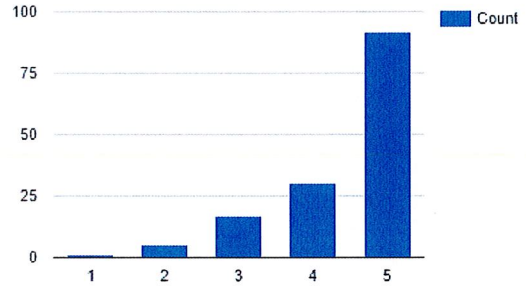
**Question 9**

**Avon Police Officers strive to have a positive impact on our community.**

Avon Police Officers strive to have a positive impact on our community.



Avon Police Officers strive to have a positive impact on our community.

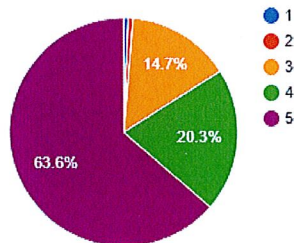


Median: 5  
Mean: 4.43  
Mode: 5  
Range: From 1 To 5  
Standard deviation: 0.88

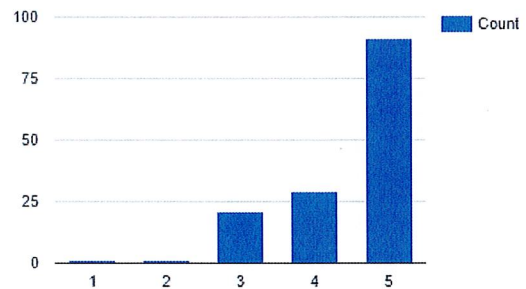
**Question 10**

**Avon Police Officers are fundamentally honest.**

Avon Police Officers are fundamentally honest.



Avon Police Officers are fundamentally honest.

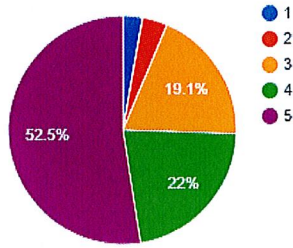


Median: 5  
Mean: 4.45  
Mode: 5  
Range: From 1 To 5  
Standard deviation: 0.82

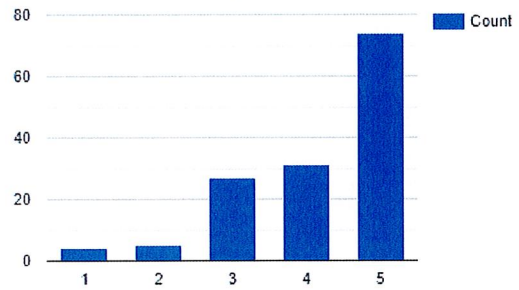
**Question 11**

**Avon Police Officers are NOT biased in their interactions with certain groups of people.**

Avon Police Officers are NOT biased in their interactions with certain groups of people.



Avon Police Officers are NOT biased in their interactions with certain groups of people.

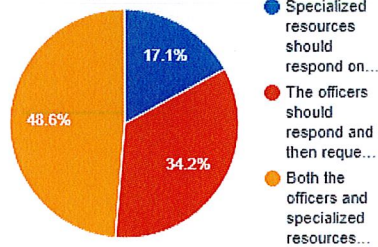


Median: 5  
 Mean: 4.18  
 Mode: 5  
 Range: From 1 To 5  
 Standard deviation: 1.04

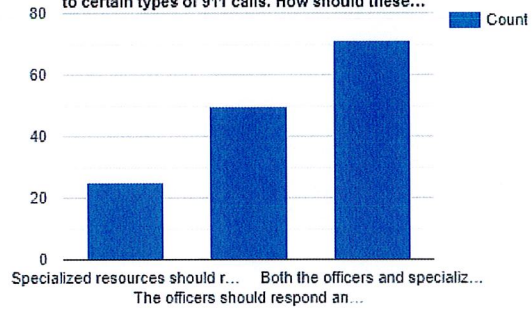
Question 12

Recent public discussion has involved assigning non law enforcement professional resources (mental health counselors, social workers, etc.) to certain types of 911 calls. How should these resources be utilized?

Recent public discussion has involved assigning non law enforcement professional resources (mental health counselors, social workers, etc.) to certain types of 911 calls. How should these...



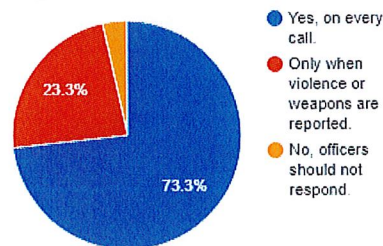
Recent public discussion has involved assigning non law enforcement professional resources (mental health counselors, social workers, etc.) to certain types of 911 calls. How should these...



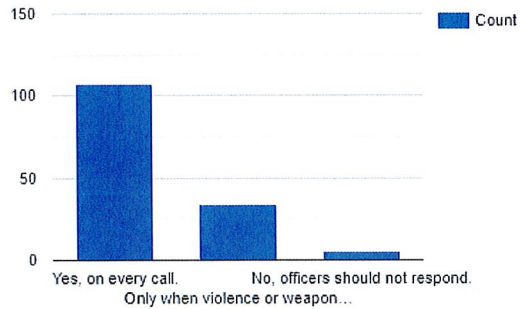
Question 13

Regarding the previous question, should the police still respond?

Regarding the previous question, should the police still respond?



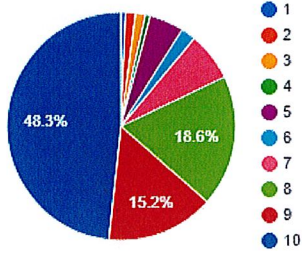
Regarding the previous question, should the police still respond?



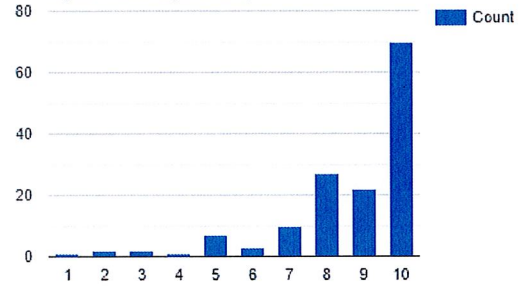
Question 14

On a scale of 1 to 10, how satisfied are you with the Avon Police Department? (1= Not satisfied at all, 10= Extremely satisfied)

On a scale of 1 to 10, how satisfied are you with the Avon Police Department? (1= Not satisfied at all, 10= Extremely satisfied)



On a scale of 1 to 10, how satisfied are you with the Avon Police Department? (1= Not satisfied at all, 10= Extremely satisfied)

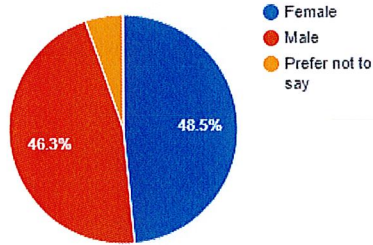


Median: 9  
 Mean: 8.63  
 Mode: 10  
 Range: From 1 To 10  
 Standard deviation: 1.89

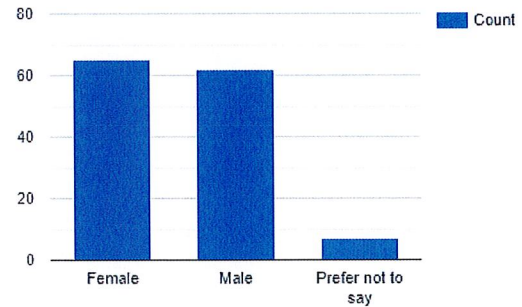
Question 18

Gender Identity (OPTIONAL):

Gender Identity (OPTIONAL):



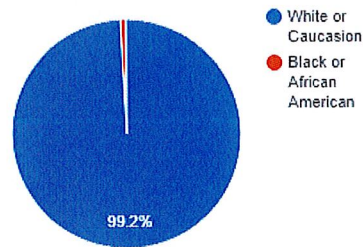
Gender Identity (OPTIONAL):



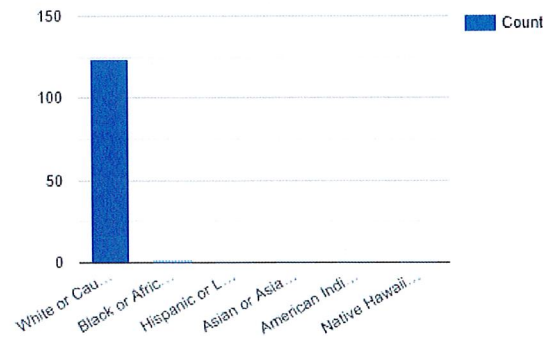
Question 19

Race Identity (OPTIONAL):

Race Identity (OPTIONAL):

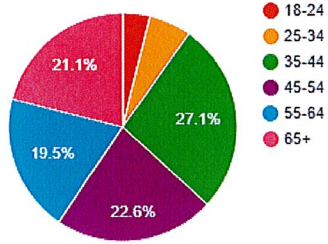


Race Identity (OPTIONAL):

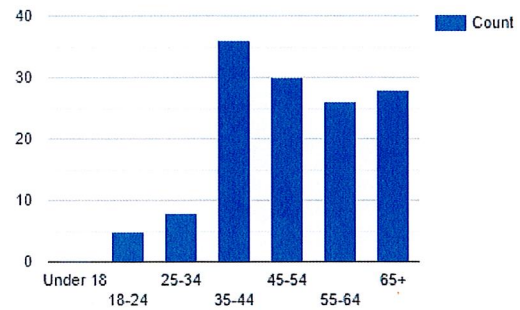


**Question 20**  
**What is your age group (OPTIONAL):**

What is your age group (OPTIONAL):

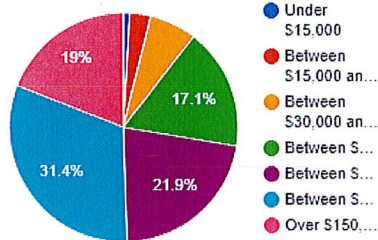


What is your age group (OPTIONAL):

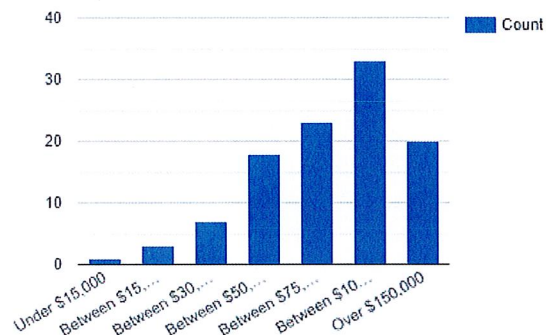


**Question 21**  
**What is your household income (OPTIONAL):**

What is your household income (OPTIONAL):

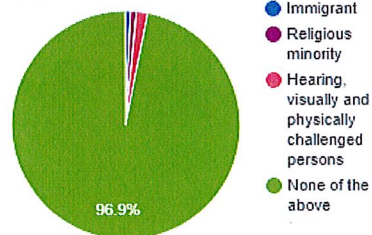


What is your household income (OPTIONAL):



**Question 22**  
**Do you identify with a marginalized group that you think influences your interactions with the Avon Police Department? (Please check all that apply)**

Do you identify with a marginalized group that you think influences your interactions with the Avon Police Department? (Please check all that apply)



Do you identify with a marginalized group that you think influences your interactions with the Avon Police Department? (Please check all that apply)

